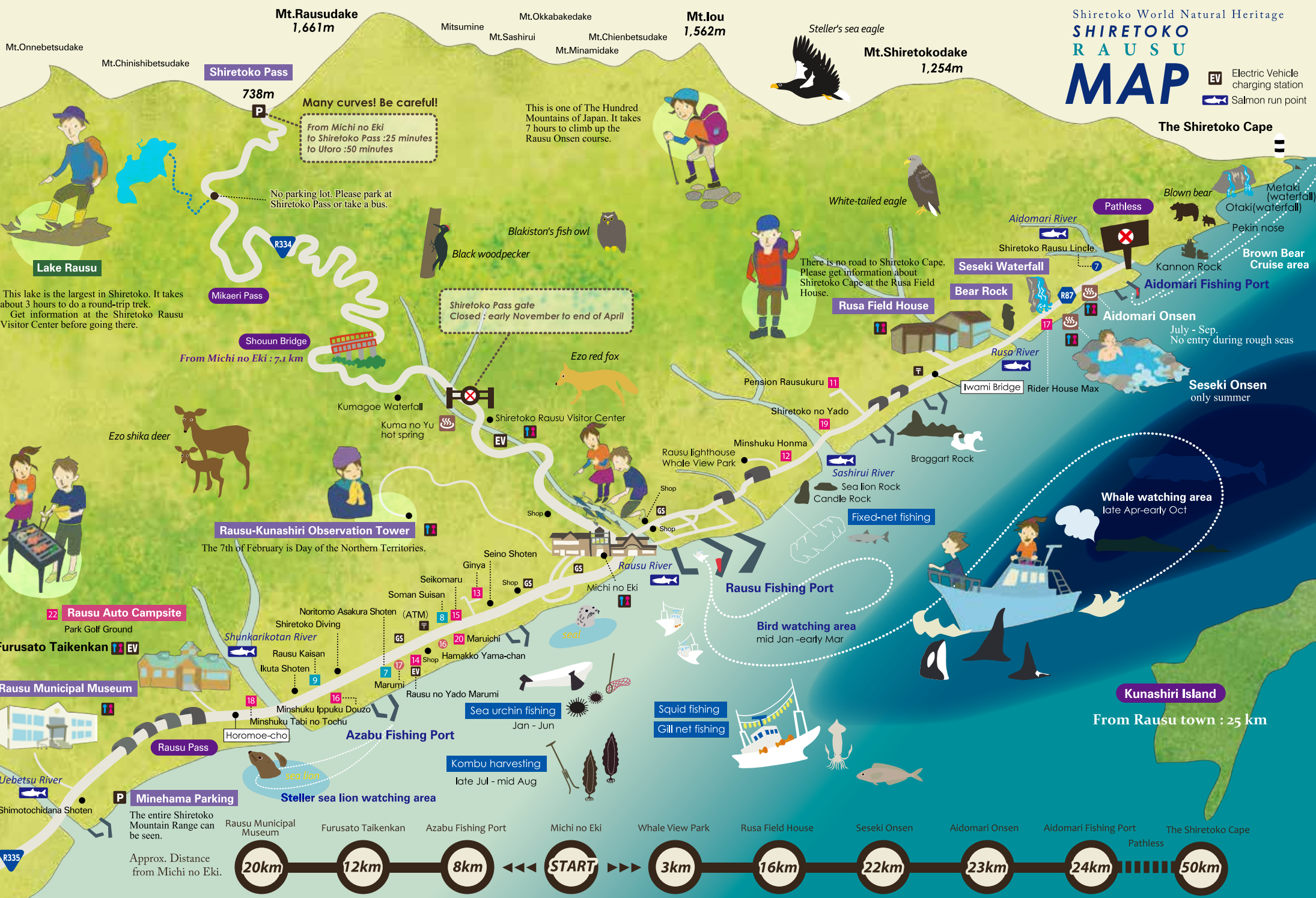


Shiretoko World Natural Heritage
SHIRETOKO
RAUSU
MAP

Electric Vehicle charging station
 Salmon run point



Mt.Rausudake
1,661m

Mt.lou
1,562m

Mt.Shiretokodake
1,254m

Shiretoko Pass
738m

Many curves! Be careful!
 From Michi no Eki to Shiretoko Pass :25 minutes
 to Utoro :50 minutes

No parking lot. Please park at Shiretoko Pass or take a bus.

This is one of The Hundred Mountains of Japan. It takes 7 hours to climb up the Rausu Onsen course.

There is no road to Shiretoko Cape. Please get information about Shiretoko Cape at the Rusa Field House.

Shiretoko Pass gate
 Closed : early November to end of April

The Shiretoko Cape

Aidomari Fishing Port
 July - Sep. No entry during rough seas

Seseki Onsen
 only summer

Rausu-Kunashiri Observation Tower
 The 7th of February is Day of the Northern Territories.

Whale watching area
 late Apr-early Oct

Bird watching area
 mid Jan -early Mar

Kunashiri Island
 From Rausu town : 25 km

The entire Shiretoko Mountain Range can be seen.
 Approx. Distance from Michi no Eki.

